

# **VOTING IN 2020**

**COURTNEY WALDEN**

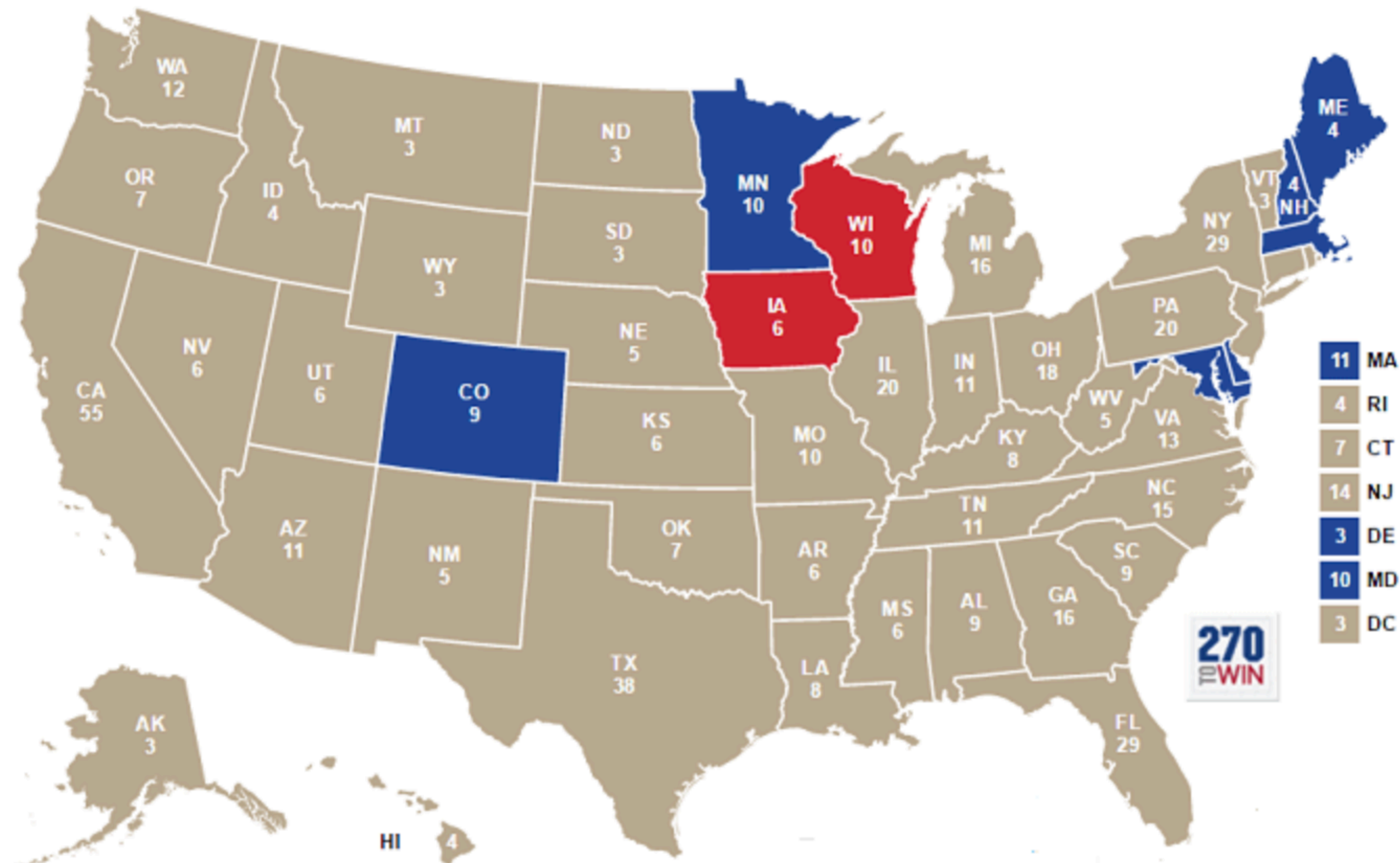
# If “Did Not Vote” Had Been A Candidate In The 2016 US Presidential Election



## Education!

## Registration!

## Burn Out!



***WHY IS VOTING  
IMPORTANT FOR YOU?***





## Criminal Justice

Capital Punishment / Death Penalty  
Cash Bail Reform  
Cocaine Sentencing Disparities  
Mandatory Minimum Sentences Reform  
Private Prisons



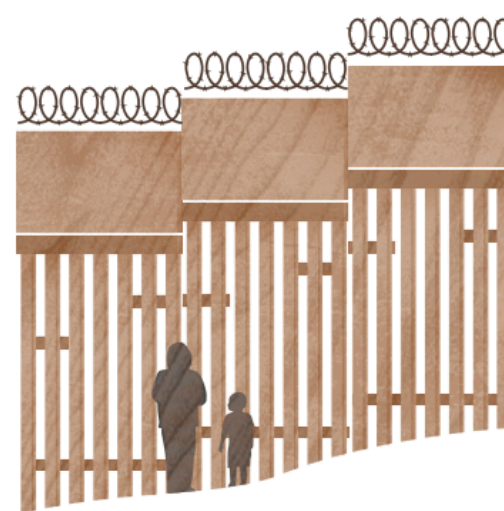
## Health Care

ACA / Coverage Expansion  
Abortion  
Drug Costs



## Military

Defense Spending  
Overseas Deployments



## Immigration

DACA  
Illegal Entry  
The Wall



## Economy

Affordable Housing  
Big Banks  
Budgets & Debt



## Food & Agriculture

Farm Economy  
Farming and Climate Change  
Nutrition  
Rights for Farm Owners and Workers



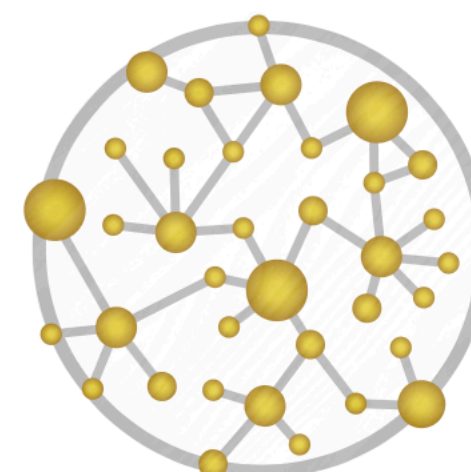
## Education

Charter Schools  
Cost of College  
Student Debt  
Teacher Pay



## Taxes

Capital Gains Taxes  
Corporate Income Taxes  
Tax Credits  
Wall Street Taxes  
Wealth Taxes



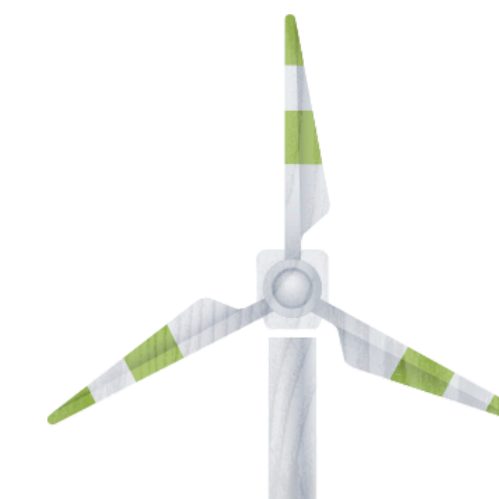
## Technology

Online Privacy  
Rural Broadband  
Social Media  
Tech Competition & Antitrust



## Trade

China  
NAFTA / USMCA  
TPP 2.0  
Tariffs



## Energy, Environment & Climate Change

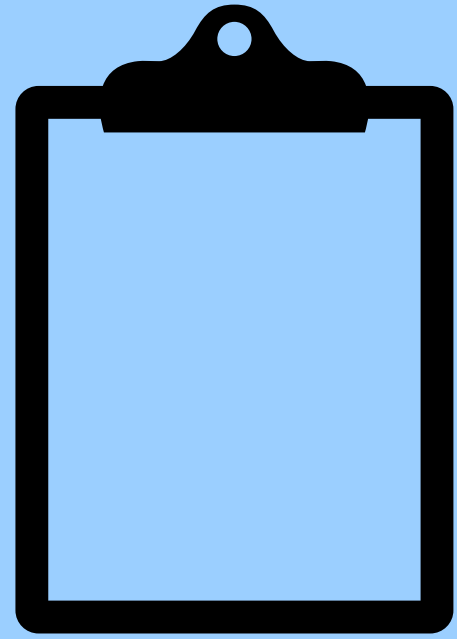
Nuclear Power  
Oil and gas drilling



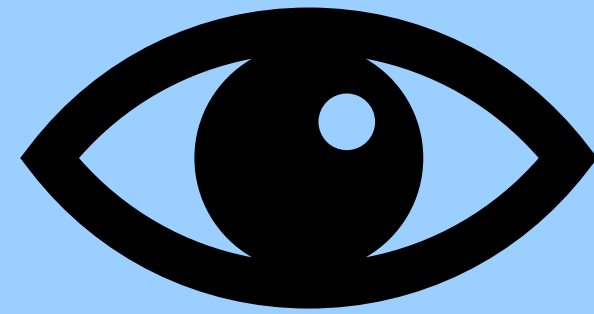
## Gun Control

Assault Weapons  
Background Checks  
Weapon Registry

# A GUIDE TO VOTE IN 2020



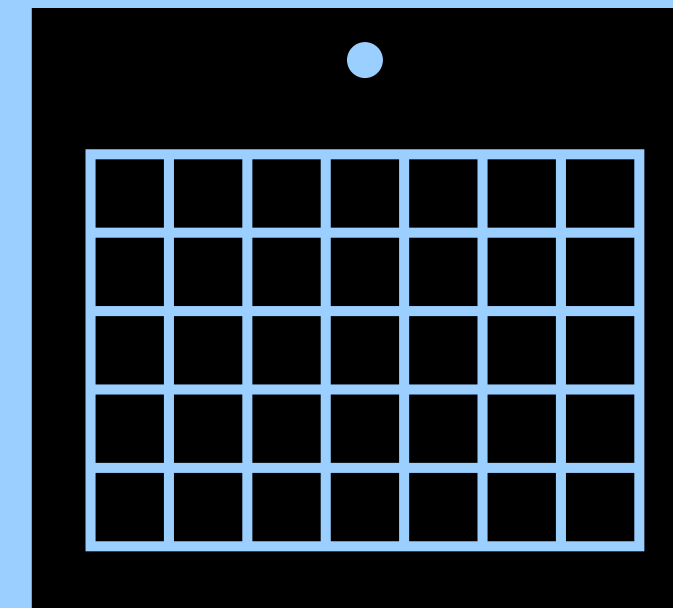
**REGISTER  
TO VOTE**



**CHECK  
REGISTRATION**



**WEIGH YOUR  
OPTIONS**



**MAKE A  
VOTING PLAN**



**CAST YOUR  
BALLOT**

# TERMINOLOGY

**BALLOT or TICKET:** A list of candidates and/or proposed laws voters can select. Some ballots are paper and completed by pen, others are digital and done by touch screen or button.

**PROVISIONAL BALLOT:** A ballot that is only counted when the voter's information has been verified. Often happens when someone votes somewhere other than where he/she is registered.

**EARLY VOTING:** The act of voting before election day. This can occur in-person or by mailing in an absentee ballot prior to the election.

**ABSENTEE BALLOT:** Voting in a state that you are absent from. Allows you to vote from somewhere other than where you are registered to vote.

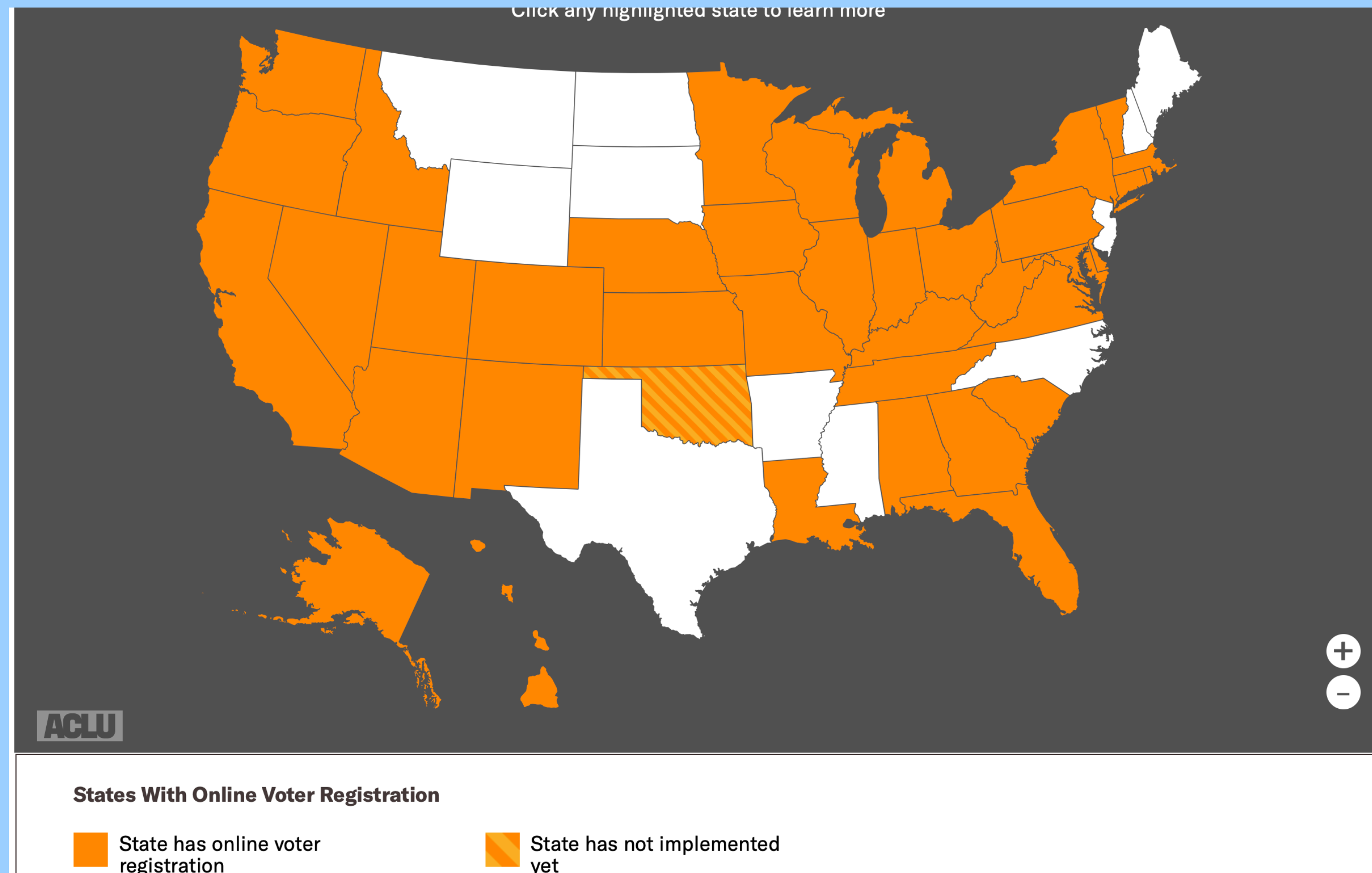
**VOTE BY MAIL:** A method of voting. It includes absentee voting.



# REGISTER TO VOTE

- Register online (39+ States)
- Visit [vote.org](https://vote.org)
- Other options
  - Register in person
  - Send in [National Mail Voter Registration Form](#)

## STATES WITH ONLINE REGISTRATION



[www.aclu.org](https://www.aclu.org)

# STATES WITH AUTOMATIC VOTER REGISTRATION



19 states + District of Colombia



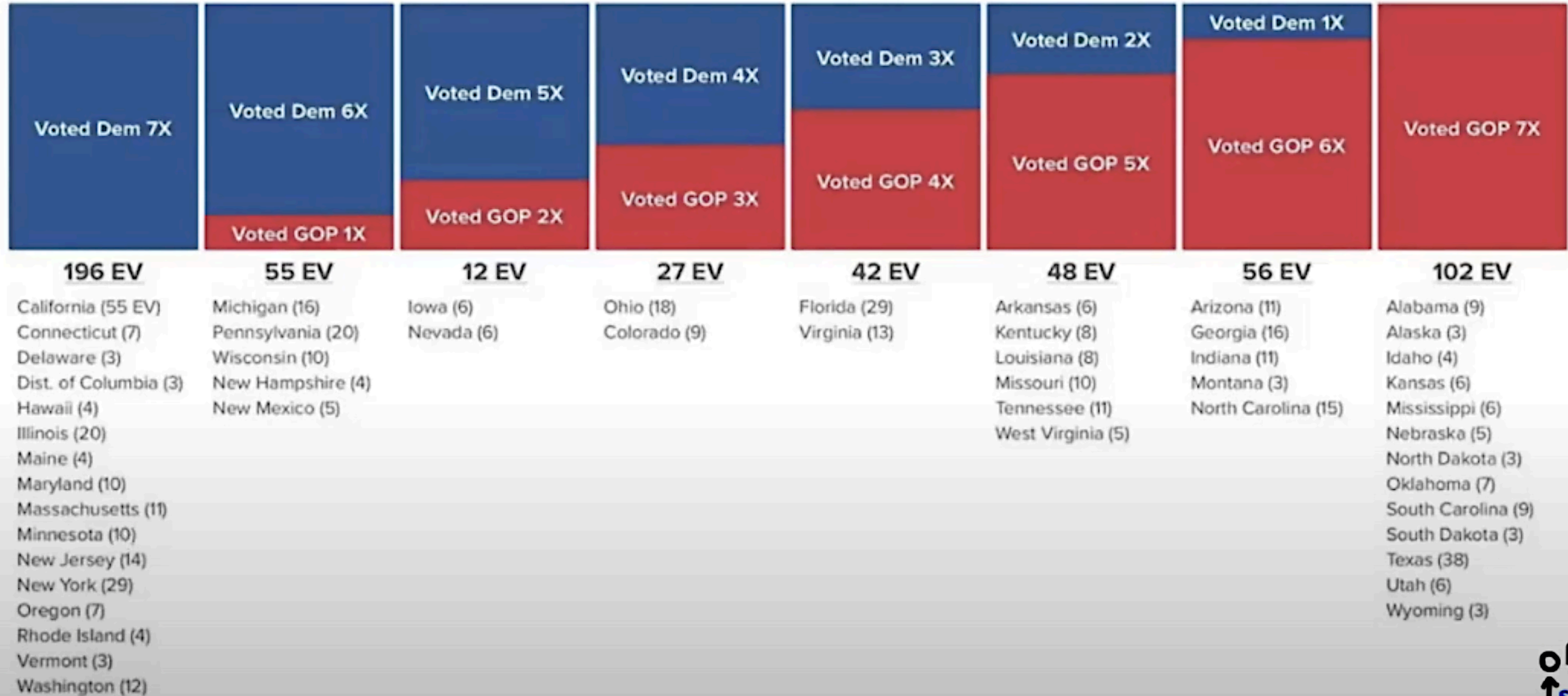
# CHECK REGISTRATION

- Visit [vote.org](https://vote.org)
- Address you are registered at MATTERS
  - In-person: Determines your polling location
  - Mail-in: ballot will be sent there
- BEFORE SEPTEMBER 22nd





# Presidential Voting by State (1992-2016)



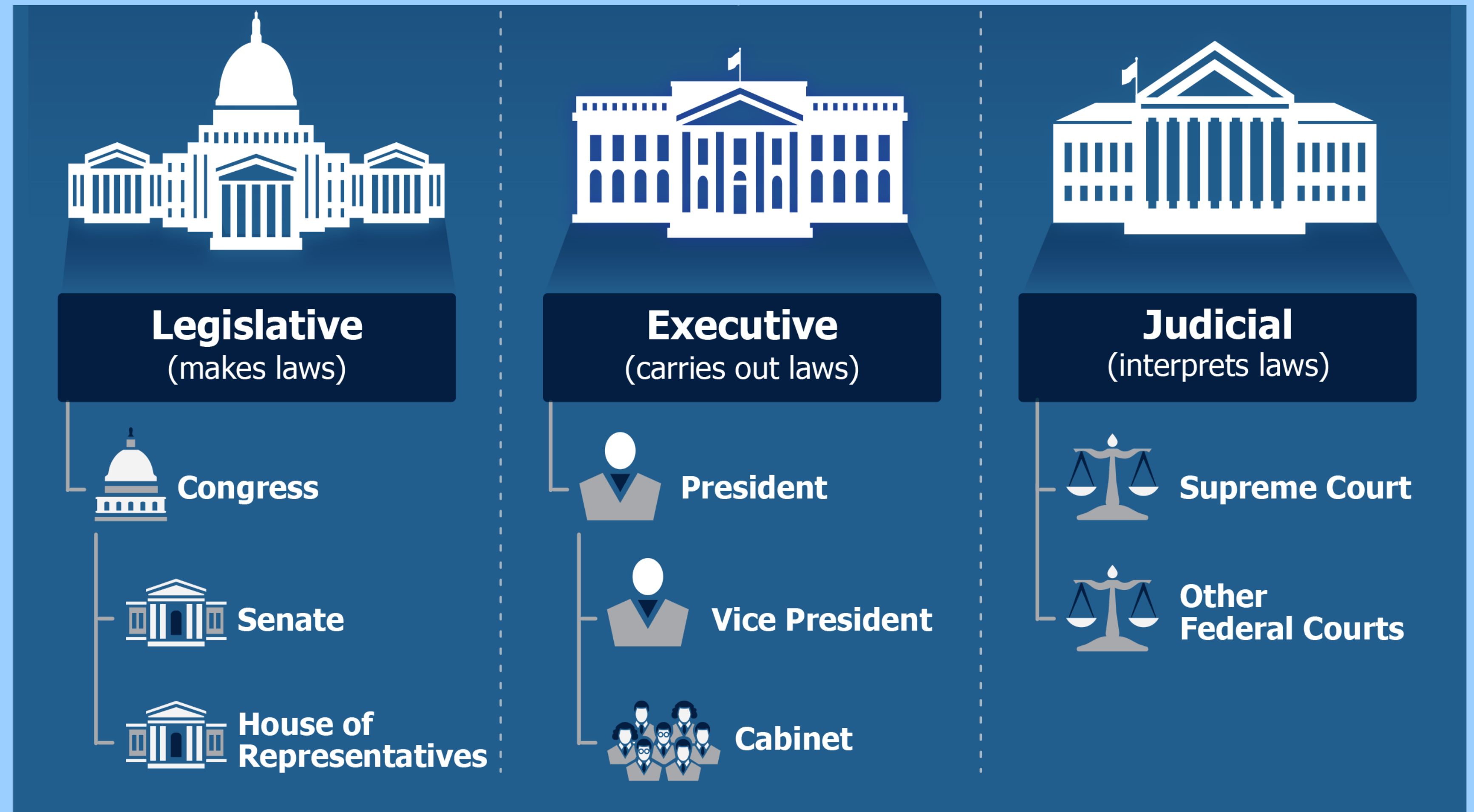
# WEIGH YOUR OPTIONS

- More than the presidency
- Congress (Even Years)

**Great  
American  
Outdoors Act**

**COVID-19 Testing,  
Reaching, And  
Contacting Everyone  
(TRACE) Act**

**CARES Act**





# WEIGH YOUR OPTIONS: CANDIDATES

## Who could be on my ballot besides the president?

### MEMBERS OF CONGRESS

They represent you in Washington in the U.S. Senate and House of Representatives. They pass federal laws that apply to all Americans.

### GOVERNOR

They can veto or sign state bills into law, issue executive orders, and lead the state's response during an emergency.

### STATE LEGISLATORS

They represent you in your state capitol. They approve the budget and pass state laws that directly impact you and your family.

### MAYOR

They approve city laws and oversee the city's departments including police, fire, education, housing and transportation departments.

### JUDGES

They sit on state courts and issue decisions on a range of issues, including criminal charges, home foreclosures, child custody cases, and civil lawsuits.

### CITY COUNCIL MEMBERS

They represent you in City Hall and are responsible for approving the city's budget, fixing roads, improving public transportation, and more.

- Who's on your ballot?
- Visit: [vote411.org/ballot](https://vote411.org/ballot)

Register to vote at **WhenWeAllVote.org**





# **MAKING A VOTING PLAN - WHERE & WHEN?**

- **BY MAIL/DROP BOX: Stay safe, reduce traffic at polls**
  - **Absentee**
    - **Some states you need to apply for absentee**
    - **Some state require valid excuse: away at college, COVID fears**
- **VOTE EARLY: Ensures that your vote counts**

# CAST YOUR BALLOT

- Oregon: Ballots sent October 14th
- If you are voting by mail or absentee, mail back ballot/drop off as soon as you receive it! **BE SURE TO DOUBLE CHECK ALL INSTRUCTIONS!**
- Copy of ID required?
- Required signature on outside of envelope? (Not grocery store signature)
- Help others do the same!!

## EUGENE BALLOT DROP OFF LOCATIONS

LANE COUNTY ELECTIONS OFFICE - 275 W 10TH AVE.

EAST SIDE OF PEARL STREET - BETWEEN 7TH AND 8TH AVE. 97401

JUVENILE JUSTICE CENTER - 2727 MLK JR. BLVD. 97401

SHELDON LIBRARY -1566 COBURG RD. 97401

UNIVERSITY OF OREGON - EMU 97403



**GO VOTE!**

